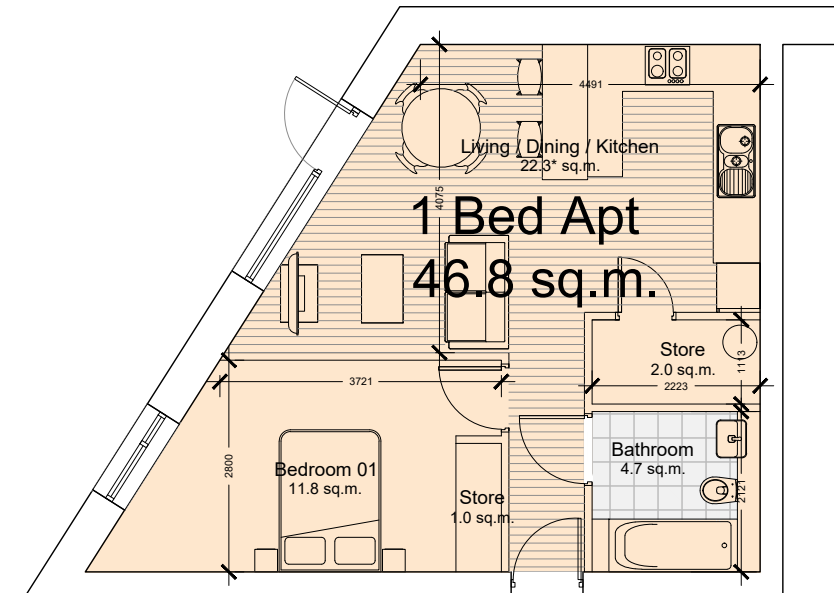
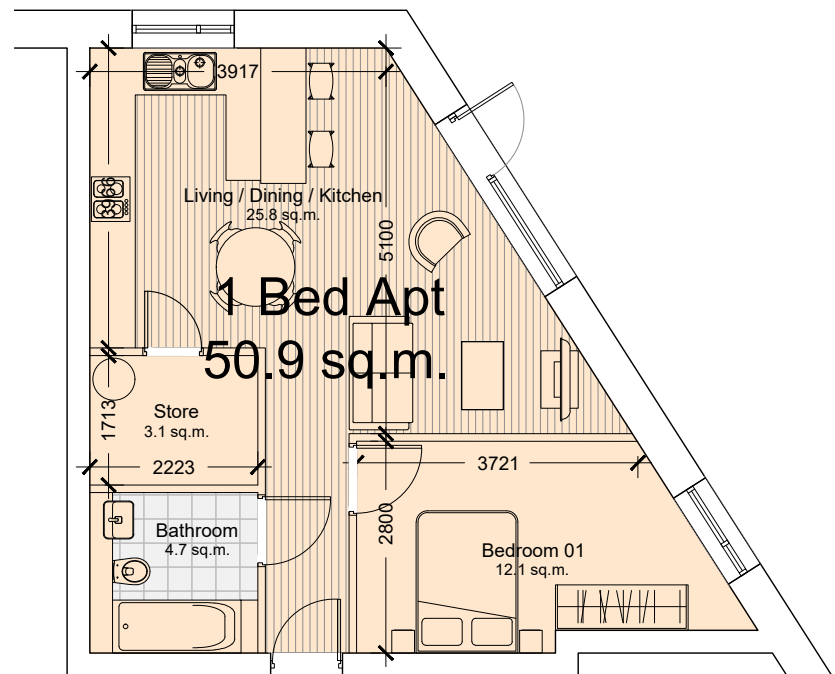


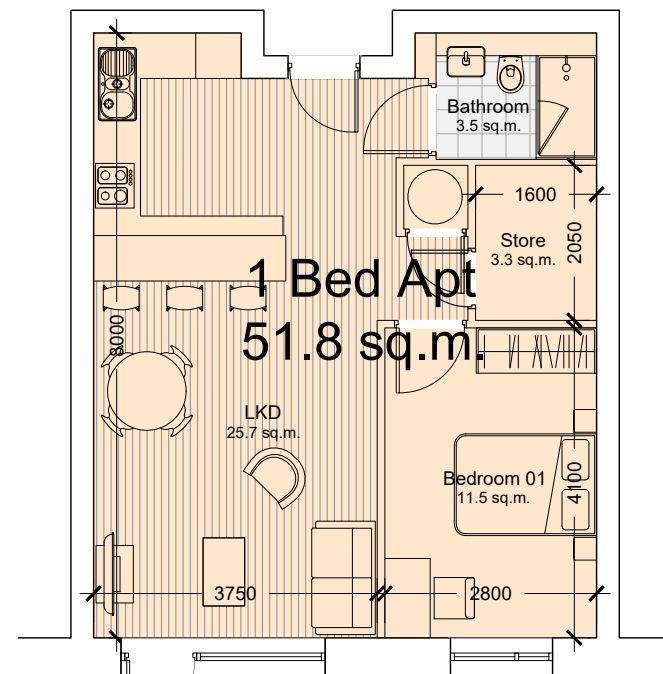
Apartment Type 2A
Area - 49.6 SQ.M



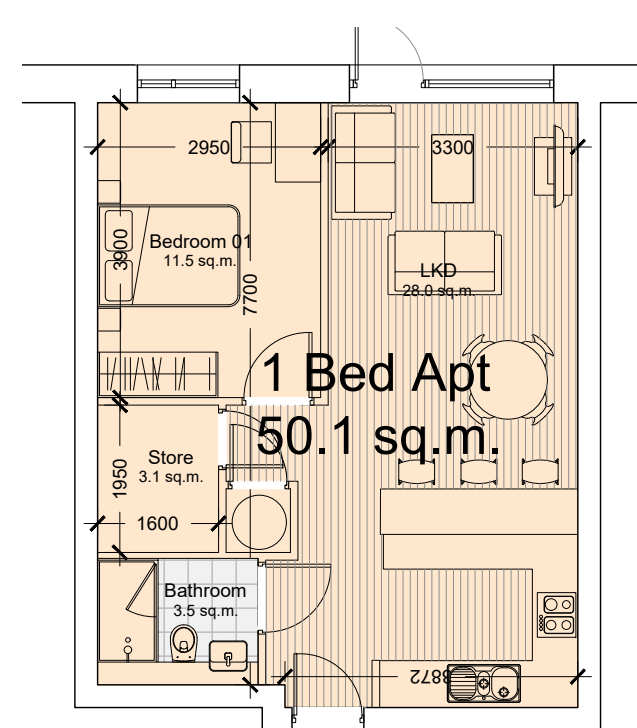
Apartment Type 2B
Area - 46.8 SQ.M



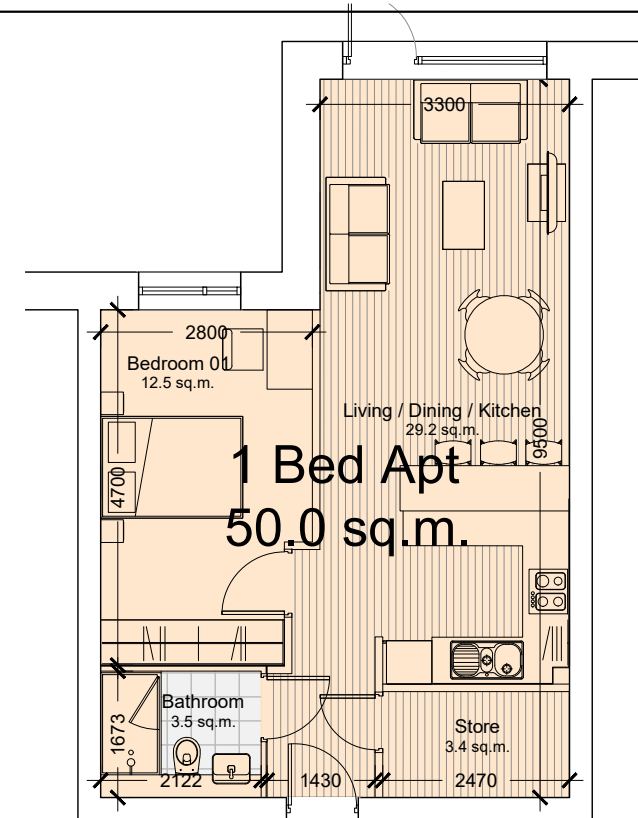
Apartment Type 2C
Area - 50.9 SQ.M



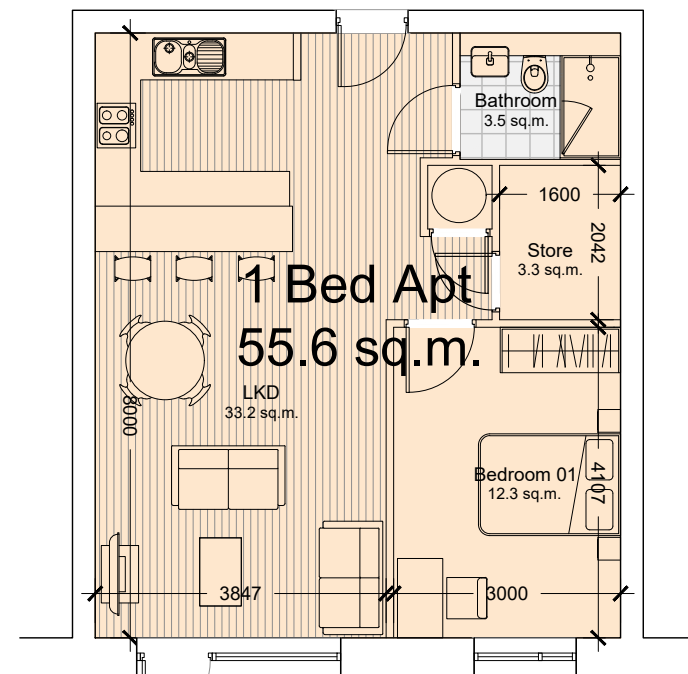
Apartment Type 2D
Area - 51.8 SQ.M



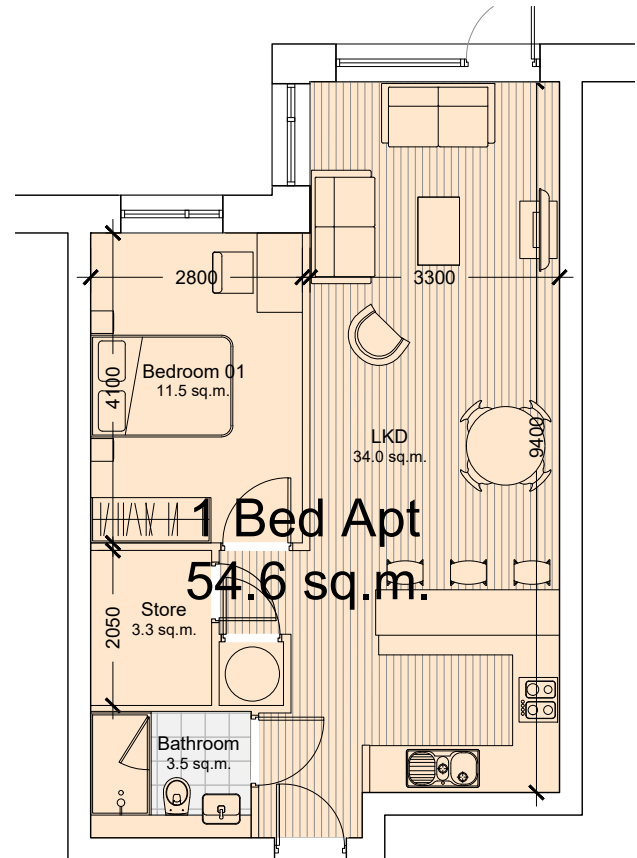
Apartment Type 2E
Area - 50.1 SQ.M



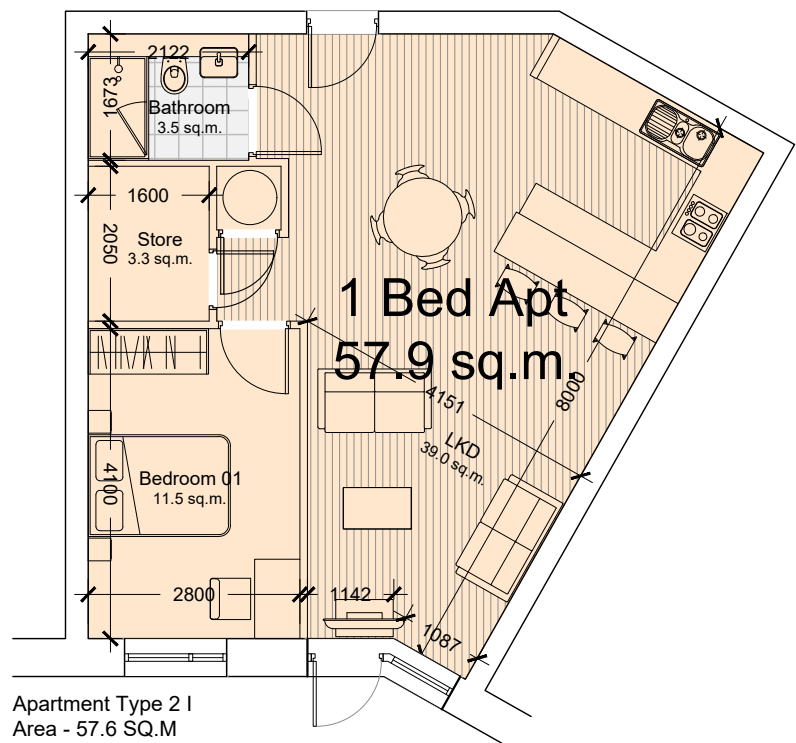
Apartment Type 2F
Area - 50.0 SQ.M



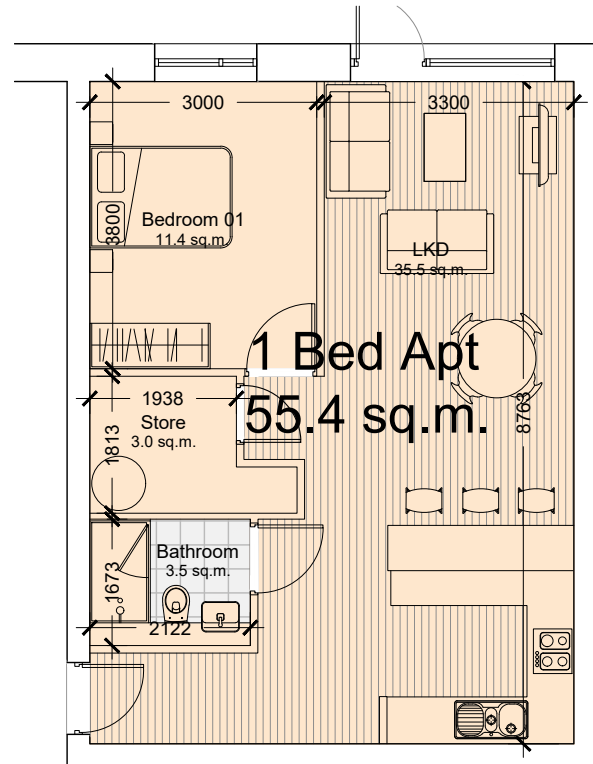
Apartment Type 2G
Area - 55.6 SQ.M



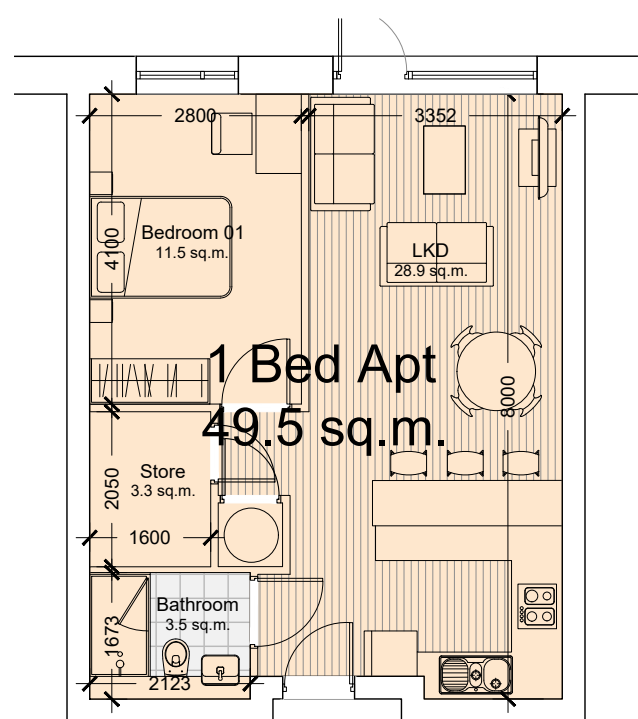
Apartment Type 2H
Area - 54.6 SQ.M



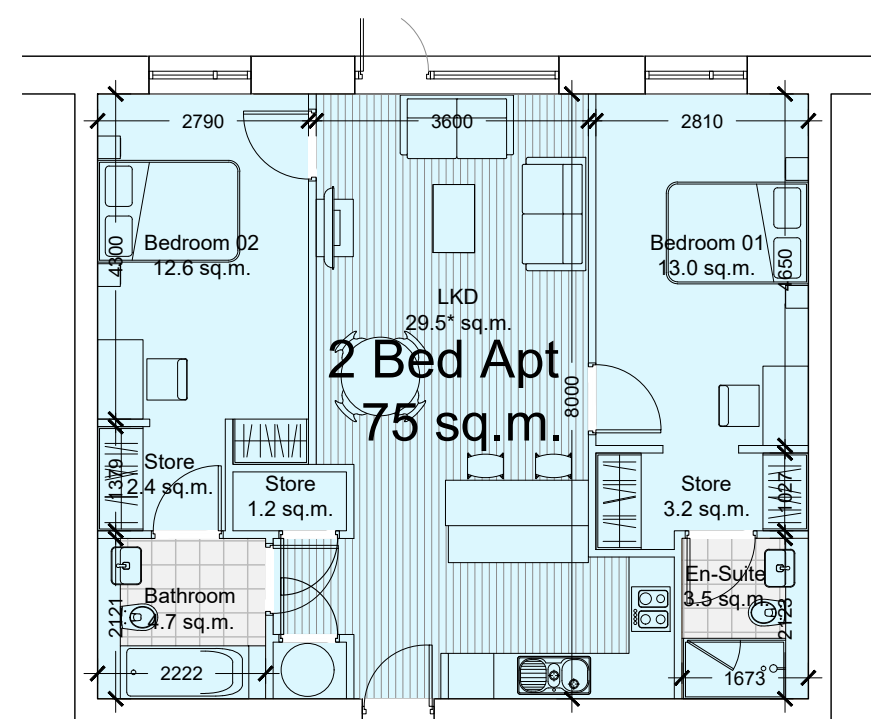
Apartment Type 2I
Area - 57.6 SQ.M



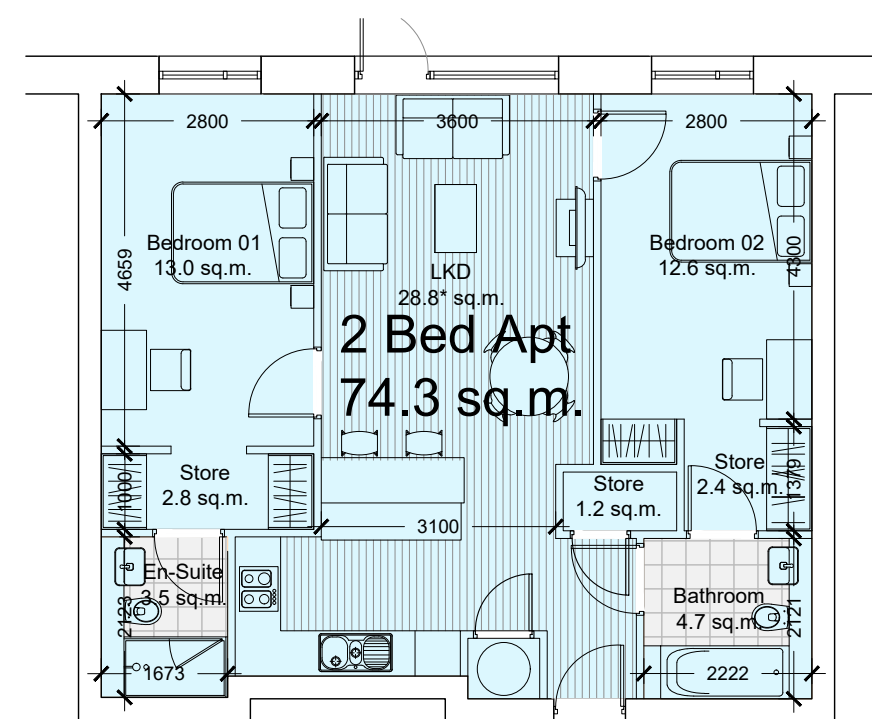
Apartment Type 2J
Area - 55.4 SQ.M



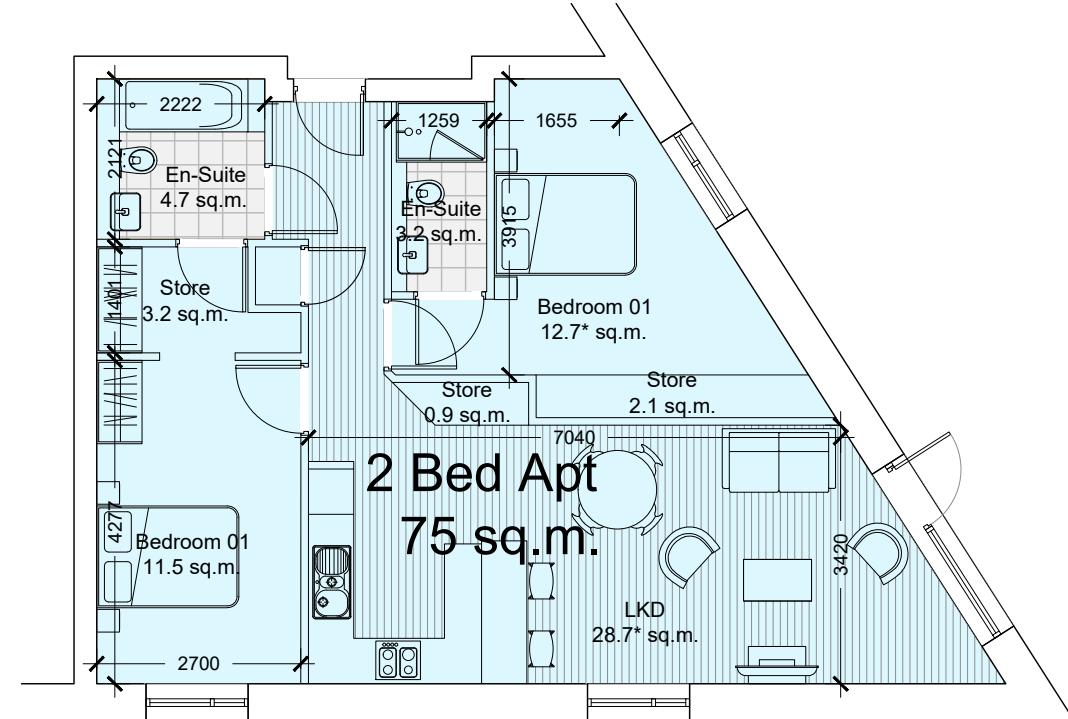
Apartment Type 2K
Area - 49.5 SQ.M



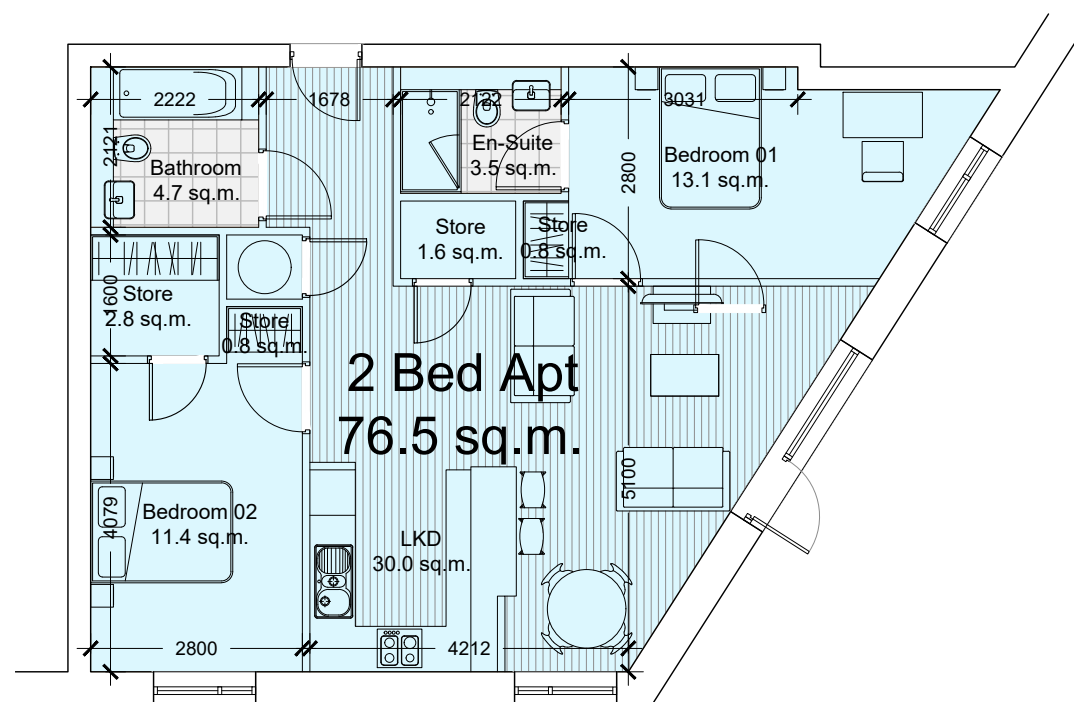
Apartment Type 4A
Area - 75.0 SQ.M



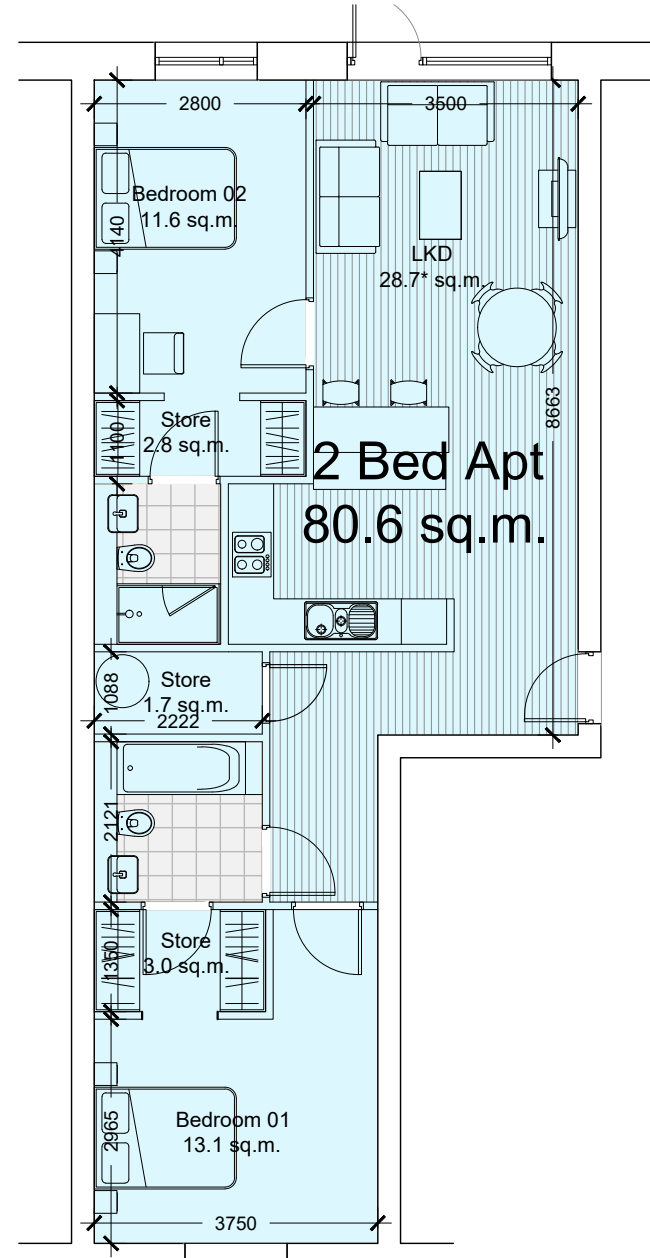
Apartment Type 4B
Area - 74.3 SQ.M



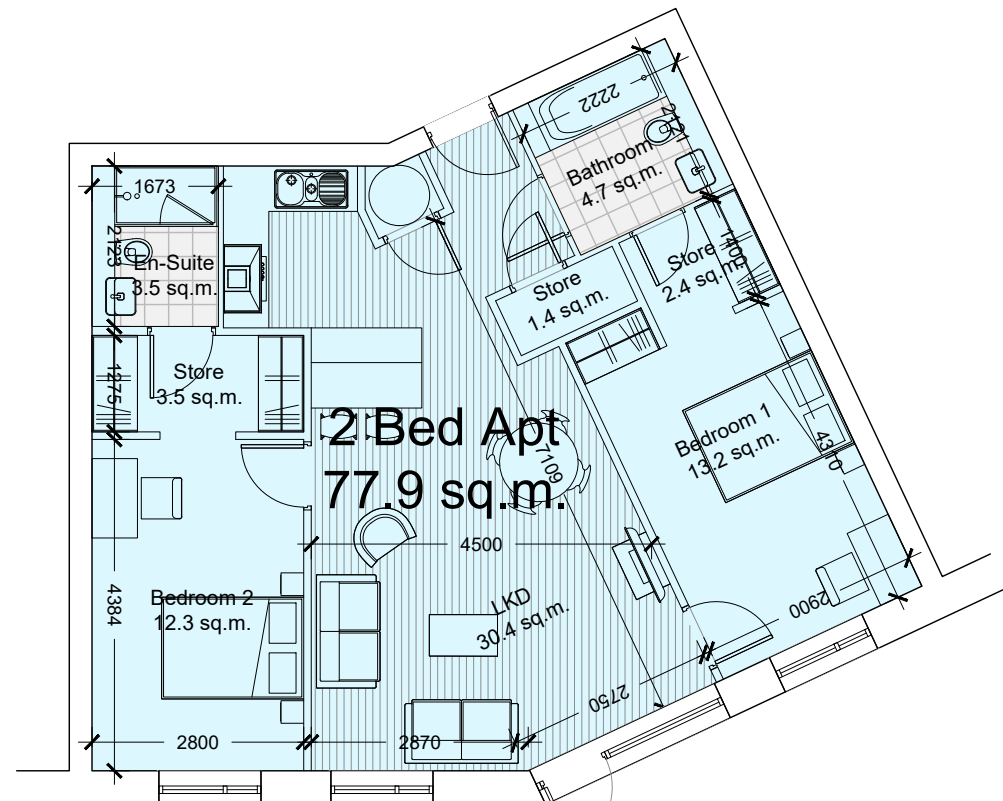
Apartment Type 4C
Area - 75.0 SQ.M



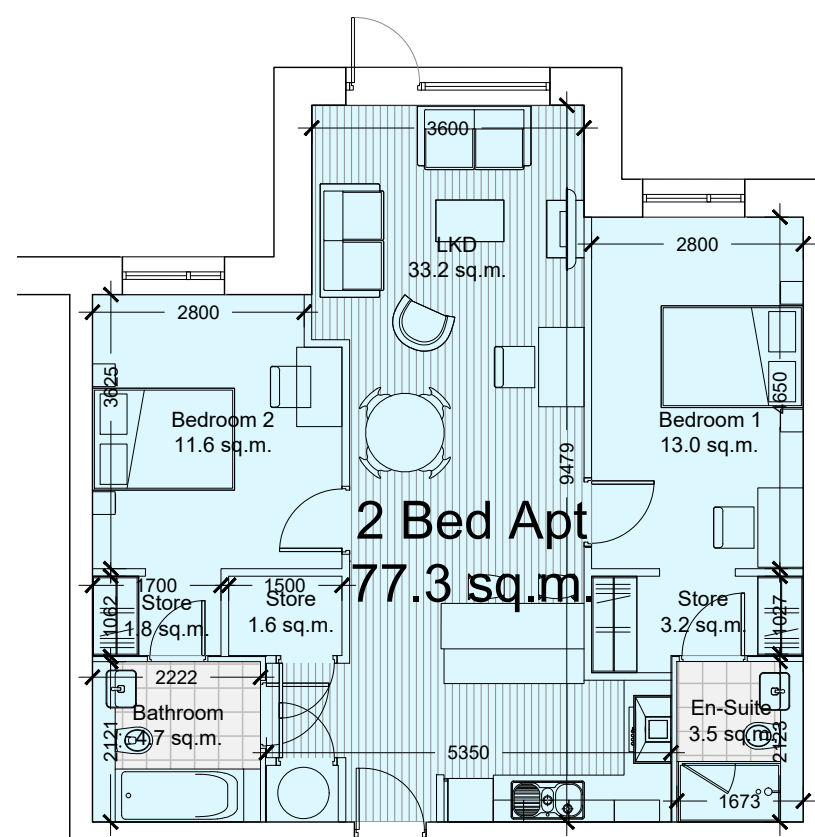
Apartment Type 4D
Area - 76.5 SQ.M



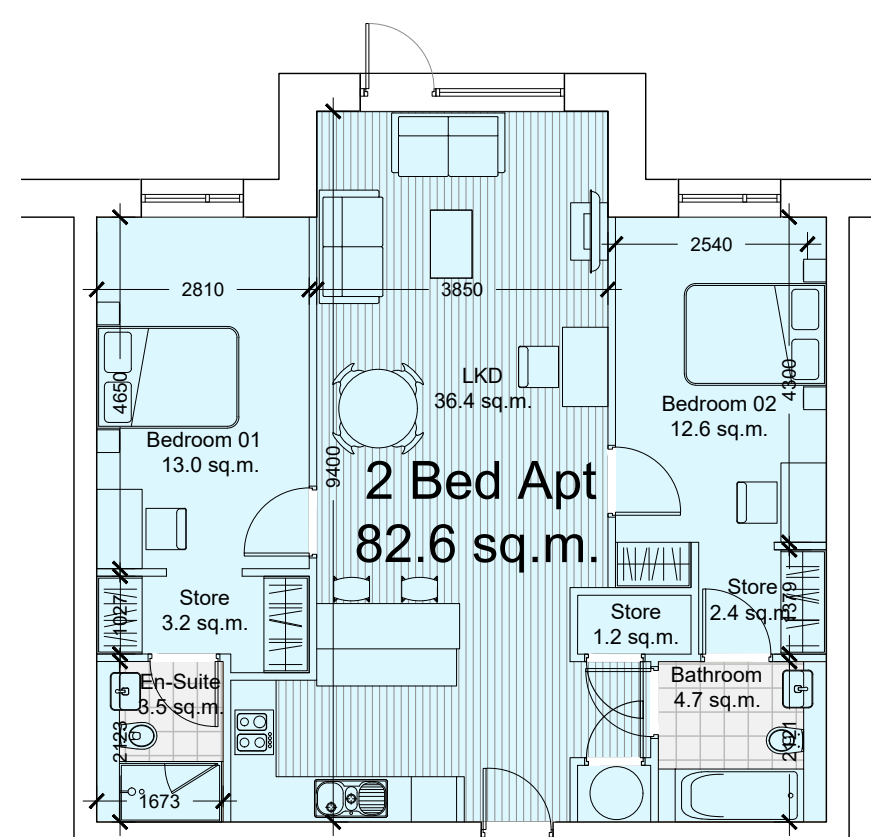
Apartment Type 4E
Area - 80.6 SQ.M



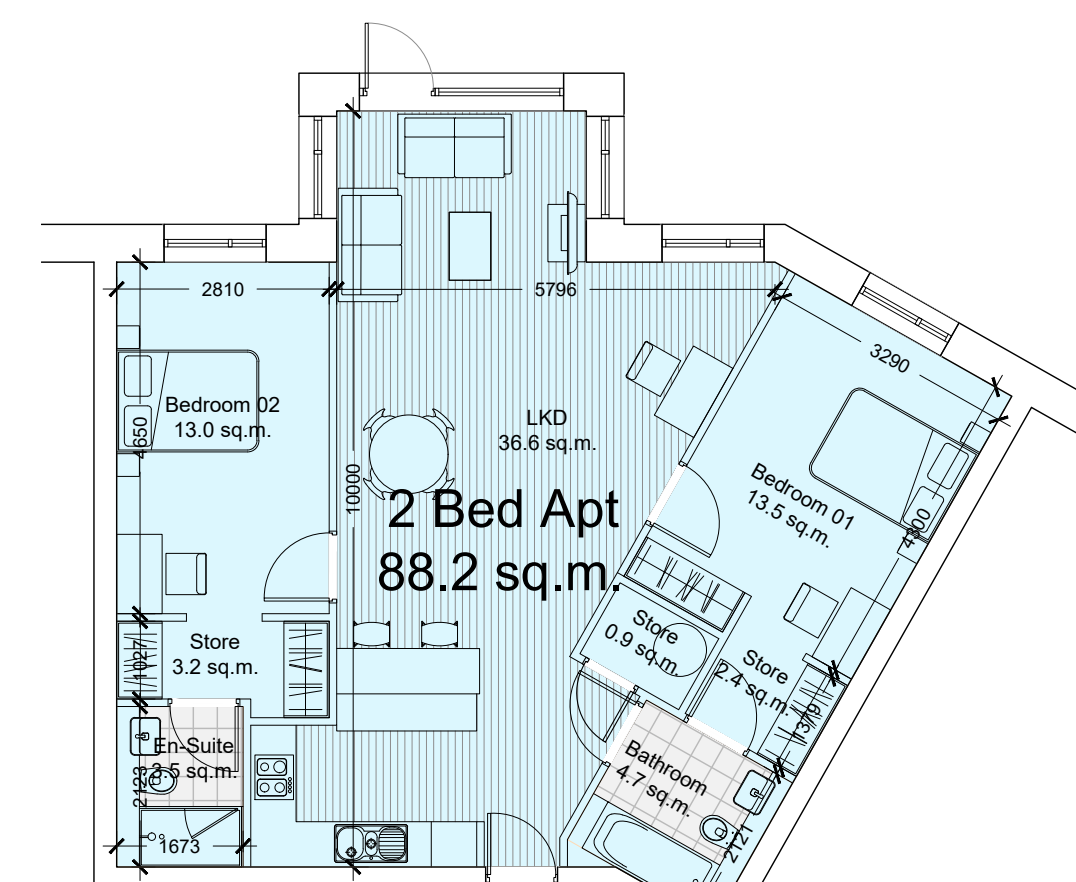
Apartment Type 4F
Area - 77.9 SQ.M



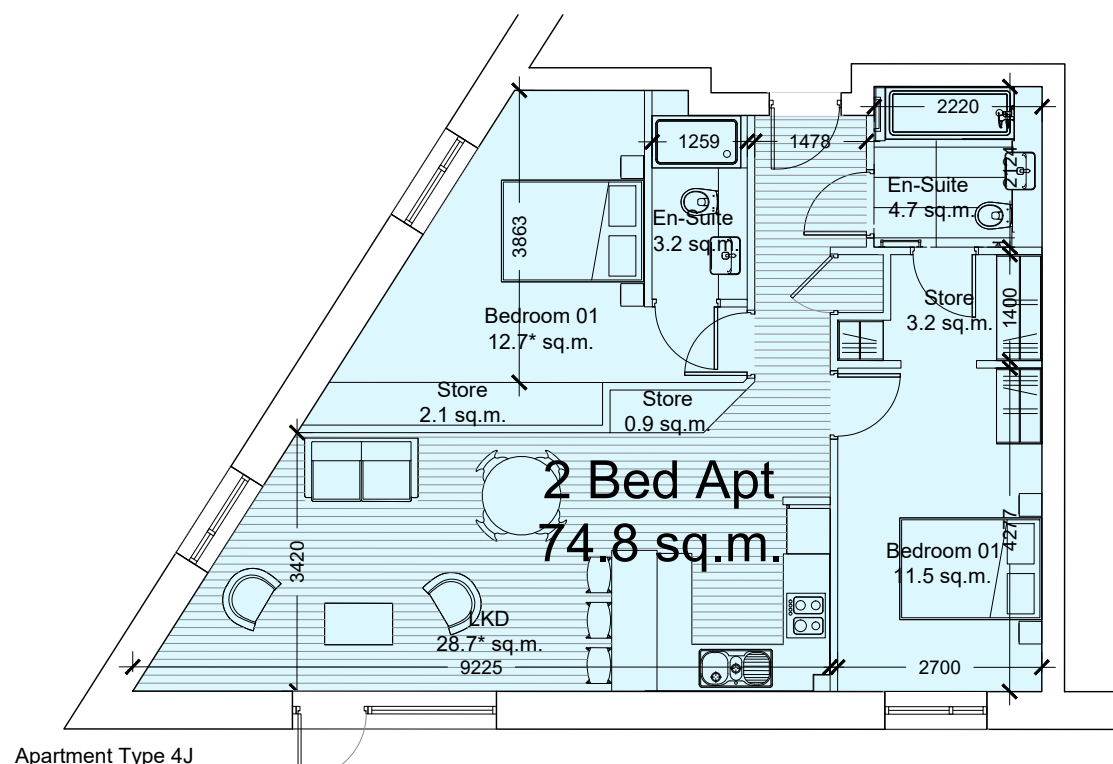
Apartment Type 4G
Area - 77.3 SQ.M



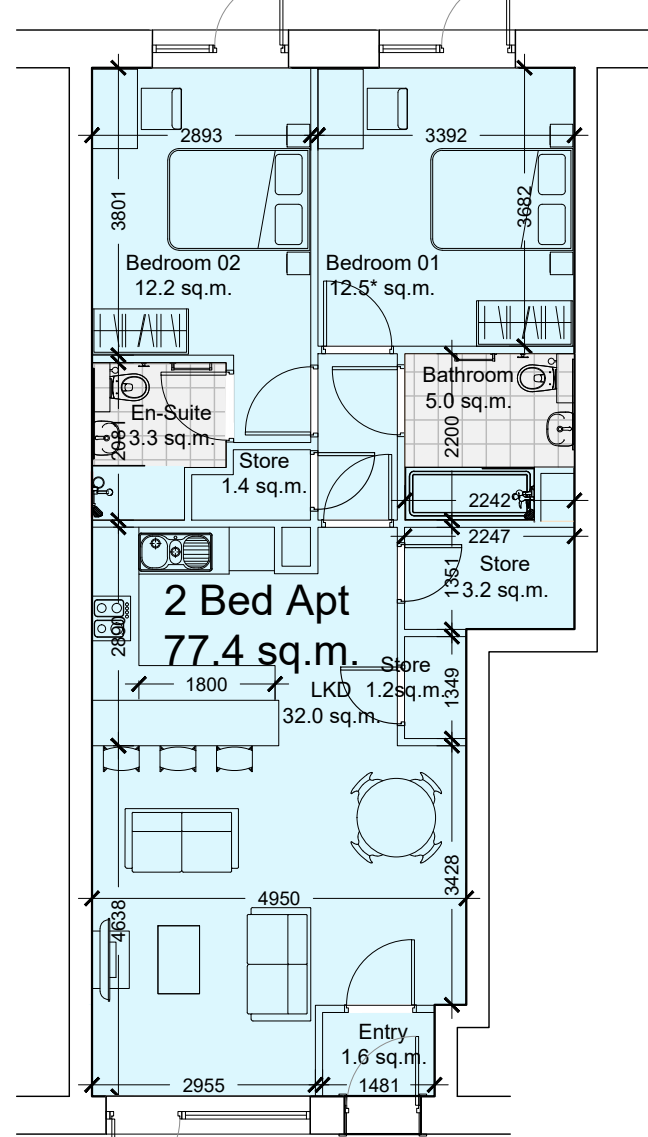
Apartment Type 4H
Area - 82.6 SQ.M



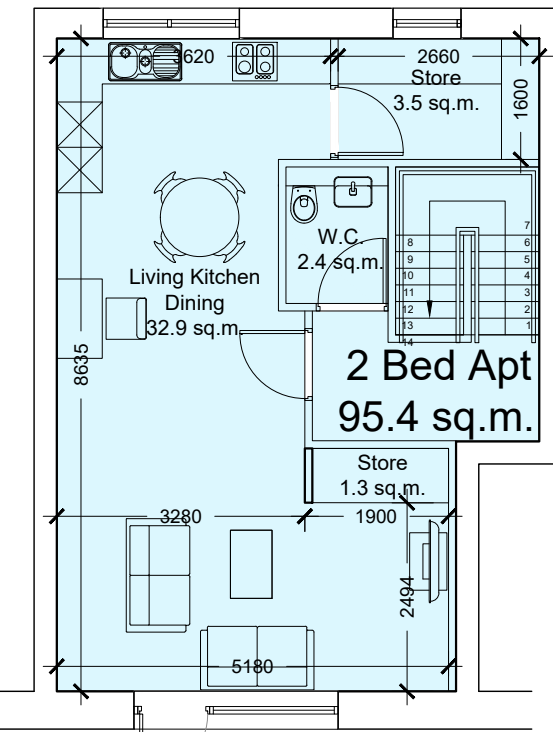
Apartment Type 4I
Area - 88.2 SQ.M



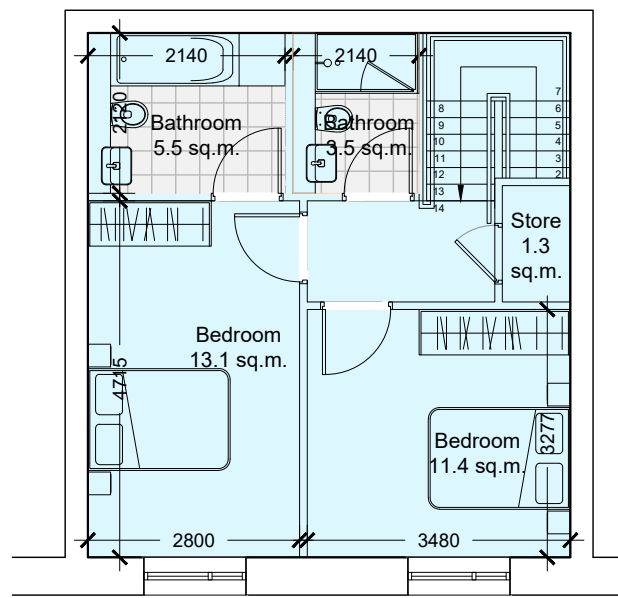
Apartment Type 4J
Area - 74.8 SQ.M



Duplex Ground floor apartment (Type 4K)
Area - 77.4 SQ.M



Duplex Two Storey 2 Bed Apartment (Type 4L)
First floor plan
Area - 51.2 SQ.M
Overall Area - 95.4 SQ.M



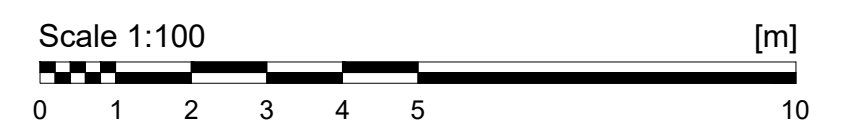
Duplex Two Storey 2 Bed Apartment (Type 4L)
Second floor plan
Area - 44.2 SQ.M
Overall Area - 95.4 SQ.M

- GENERAL NOTES
1. COPYRIGHT RESERVED
 2. DO NOT SCALE DRAWING. USE FIGURED DIMENSIONS ONLY.
 3. ALL DISCREPANCIES TO BE REPORTED TO ARCHITECT
 4. THE CONTRACTOR IS RESPONSIBLE FOR CHECKING ALL LEVELS AND DIMENSIONS.
 5. ALL STRUCTURE TO BE TO STRUCTURAL ENGINEERS DETAILS.
 6. ALL MECH & ELEC SERVICES TO SERVICES ENGINEERS DETAILS.
 7. ALL PROPRIETARY ITEMS TO BE INSTALLED IN ACCORDANCE WITH MANUFACTURERS INSTRUCTIONS.
 8. CONTRACTOR IS RESPONSIBLE FOR THE COORDINATION OF STRUCTURE FINISHES AND SERVICES.

| REV | DATE | DESCRIPTION | BY |
|-----|------|-------------|----|
| | | | |
| | | | |
| | | | |
| | | | |

- LEGEND
- One bed apartment
 - Two bed 4 person apartment

Please note that the window and external door positions provided on this drawing are merely indicative. For the actual proposed ope sizes and locations refer to the apartment block plans and the duplex unit floor plans.



JOHN FLEMING ARCHITECTS

The Tree House
17 Richview Office Park, DUBLIN 14.
T: (01) 6689888 E: info@jfa.ie W: www.jfa.ie

CLIENT
Ardstone Homes Ltd.

PROJECT
White Pines East SHD
Stocking Ave

DRAWING
Apartment Typologies
Plans (All)

SCALE
1:100@A1

JOB NO.
1941

DRAWN BY
OC/CF

DATE
March 2021

DRAWING NUMBER
WPE-JFA-XX-XX-DR-A-P3001

REVISION

DRAWING LOCATION
w:\39_john\1941\03-planning\312.drw

DRAWING STATUS
Planning